



**Public Health**  
Prevent. Promote. Protect.

**Wayne County Health Department**

**Wayne County  
Suicides Summary  
2002-2018**

**Dedication**

*This report is dedicated to those families who have lost a loved one due to suicide. Although there are no names in this report, they are not forgotten and this report will hopefully bring more awareness regarding the prevention of suicide in Wayne County.*

## Introduction

Suicide is a major public health concern that impacts individuals, families and communities. It’s a complex issue with multiple contributing factors. The public health approach aims to reduce the factors that increase the likelihood of suicide and uplift those that protect against it. Working together to reduce stigma and ensure everyone has access to mental health care.<sup>1</sup> Suicide is the 10<sup>th</sup> leading cause of death in the U.S. In 2017, 47,173 Americans died by suicide and there were an estimated 1.4 million suicide attempts. Loss of life and self-injury is not the only cost of suicide; in 2015, suicide and self-injury cost the U.S. 69 billion dollars. For the state of Ohio specifically, suicide cost a total of \$1.7 billion dollars in combined lifetime medical and work loss in 2010 or an average of 1.2 million dollars per suicide death.<sup>2</sup> Researchers found that more than half of people who died by suicide did not have a known diagnosed mental health condition at the time of death. Relationship problems or loss, substance misuse; physical health problems; and job, money, legal or housing stress often contribute. Firearms are the most common method of suicide by those with and without a known diagnosed mental health condition.<sup>3</sup> Suicide is a concern for Wayne County specifically because nationally those living in rural areas have higher rates of suicide compared to urban areas.<sup>4</sup>

## Wayne County Findings

### Suicide Numbers by Gender

Table 1 shows that males are significantly more likely to commit suicide than females. This is true across the state and nation as well. Suicide rates for females are 6.1 (OH) and 6.2 (U.S.) as opposed to rates for males which are 23.8 (OH) and 22.2 (U.S.). Across all age groups, white males account for 7 out of 10 suicides (Figure 1).<sup>4</sup>

Table 1. Suicide Numbers by Gender Wayne County.

Gender	
Male	157
Female	29

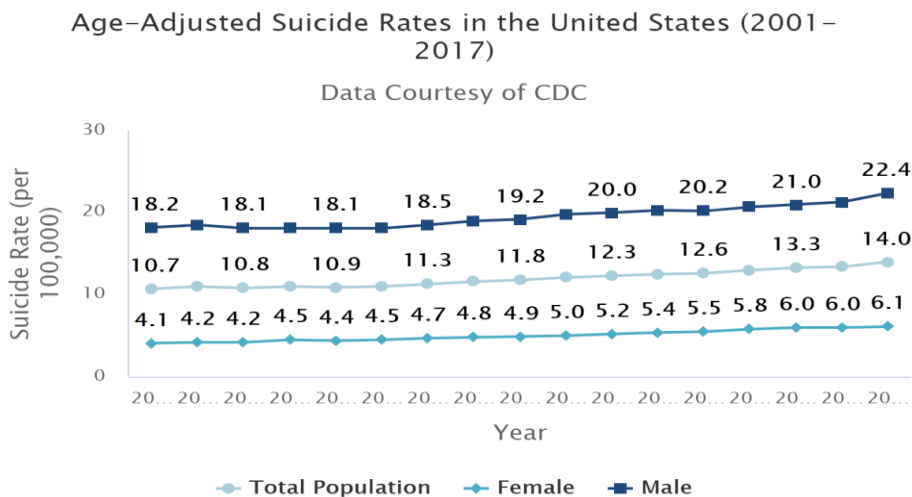


Figure 1. U.S. Suicide Rates by Gender.

### Suicide Numbers by Method

The most common method of suicide in Wayne County for men and women is firearms, and the second most common method of suicide is asphyxiation. This is represented in Table 1 and Figure 1. In 2017, firearms were the most common method of suicide accounting for more than half of all suicide deaths nationally (23,854).<sup>2</sup> Table 3 Shows the breakdown of suicides by method nationally in 2017.<sup>5</sup>

Table 2. Numbers by Method Wayne County. \*Poisoning also includes CO poisoning

Gender	Asphyxiation	Gunshot	Overdose	Wound	Poisoning	Total
Male	52	87	11	3	4	157
Female	10	10	7	2	0	29
<b>Total</b>	<b>62</b>	<b>97</b>	<b>18</b>	<b>5</b>	<b>4</b>	<b>186</b>

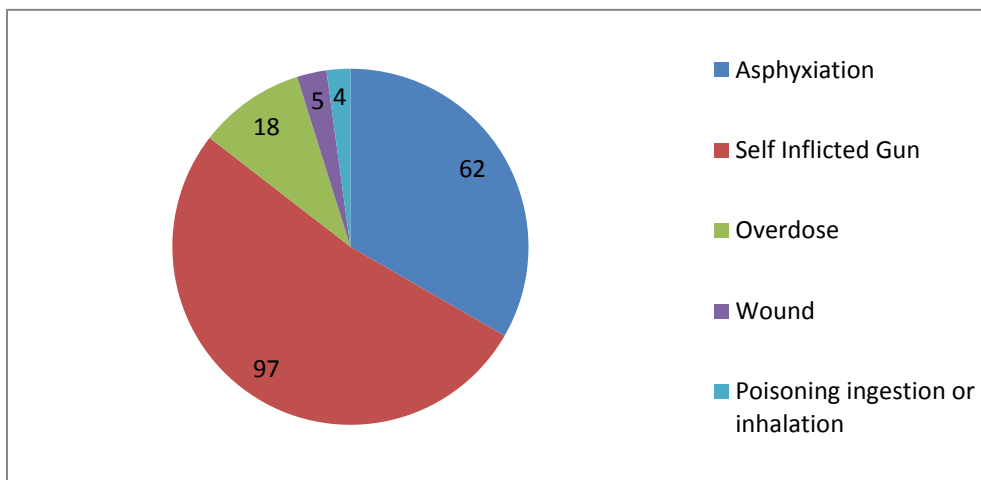


Figure 2. Numbers by Method. \*Poisoning also includes CO poisoning

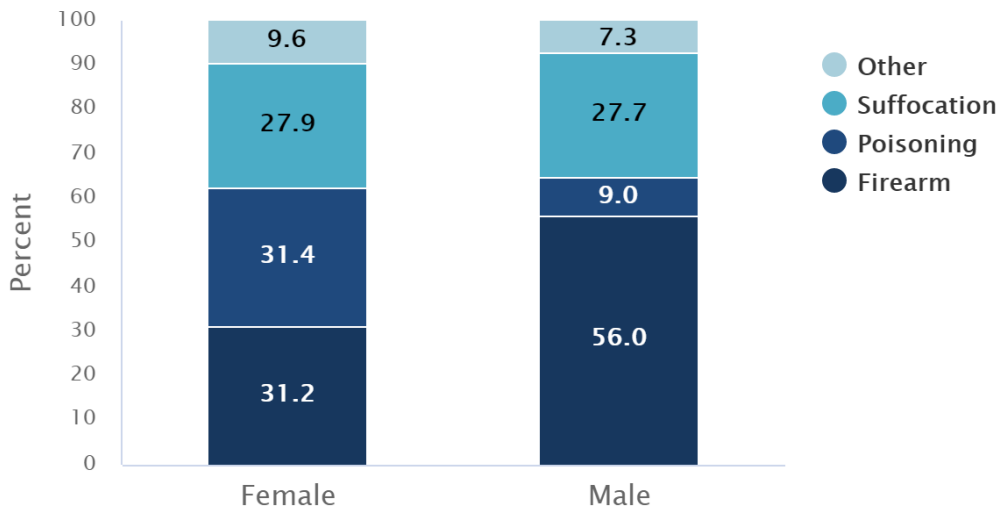
Table 3. Suicide Method U.S.

Suicide by Method (2016)	
Data Courtesy of CDC	
Suicide Method	Number of Deaths
Total	44,965
Firearm	22,963
Suffocation	11,642
Poisoning	6,698
Other	3,662

Figure 3 shows the percentage of suicide deaths by method in the United States by gender in 2017. As seen in the graph, the number one overall method of suicide is still firearm, but for females firearms and poisoning are the top methods.<sup>5</sup>

## Percentage of Suicide Deaths by Method in the United States (2017)

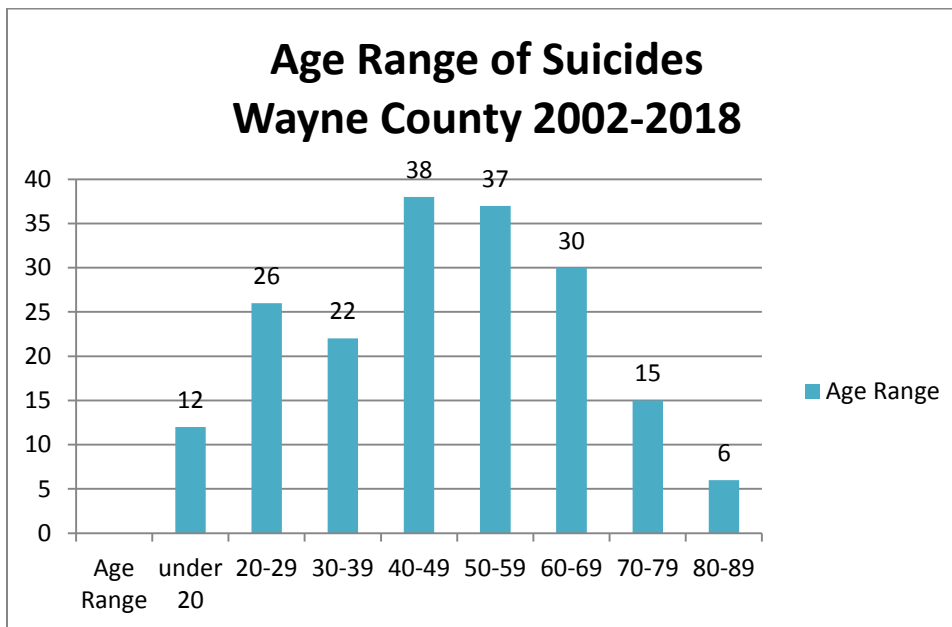
Data Courtesy of CDC



**Figure 3. Breakdown of Methods by Gender**

### *Suicide Numbers by Age*

Since 2002, the highest suicide rate was among adults between 40 and 59 years of age. The second highest rate occurred in those 60-69. Younger groups have consistently lower suicide rates than middle-aged and older adults. This is represented in Figure 2. These numbers are comparable to the state. Since 2012 in Ohio, those aged 45-64 have had the highest suicide rates.<sup>4</sup>



**Figure 4. Numbers by Age.**

Table 2 shows the method of suicide by age range. The most common methods are gunshot and asphyxiation across all age ranges.

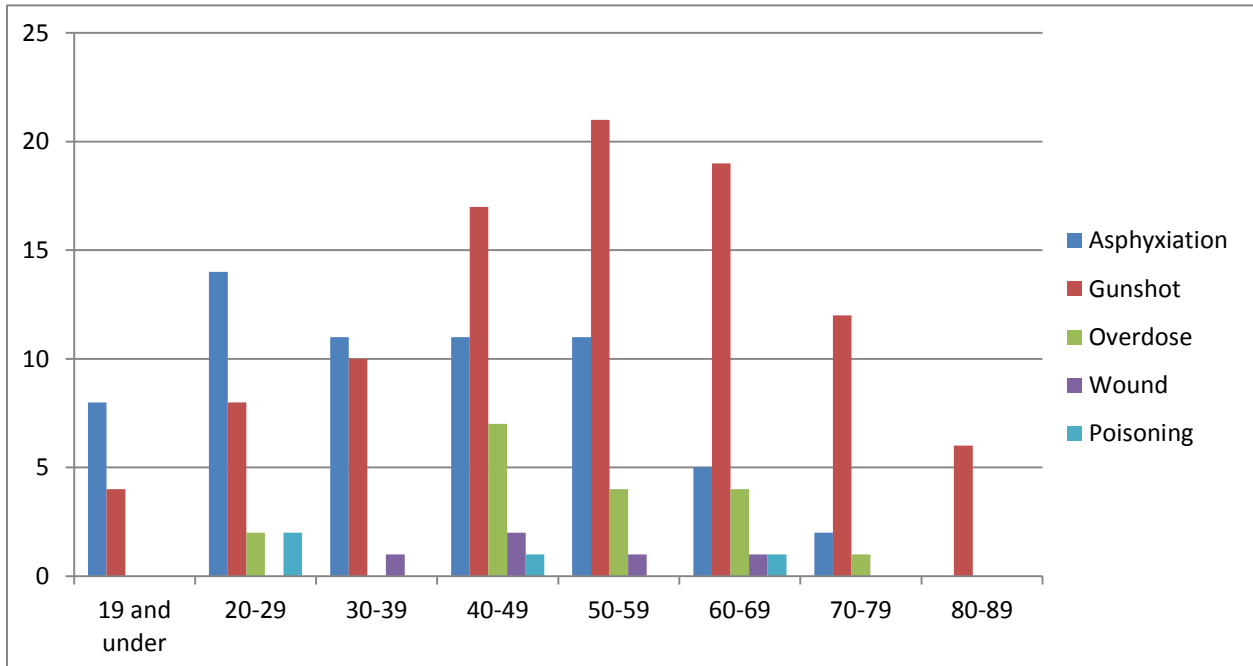


Figure 5. Suicide Attempt by Age and Method. \*Poisoning also includes CO poisoning

### Suicide Numbers by Year

Suicide Rates fluctuate from year to year. As seen in Figure 3, suicide deaths were highest in 2017 and 2009 and lowest in 2008. Suicide rates have been rising in nearly every state since 1999. In Ohio, suicide rates have increased by 30-37% since 1999.<sup>4</sup>

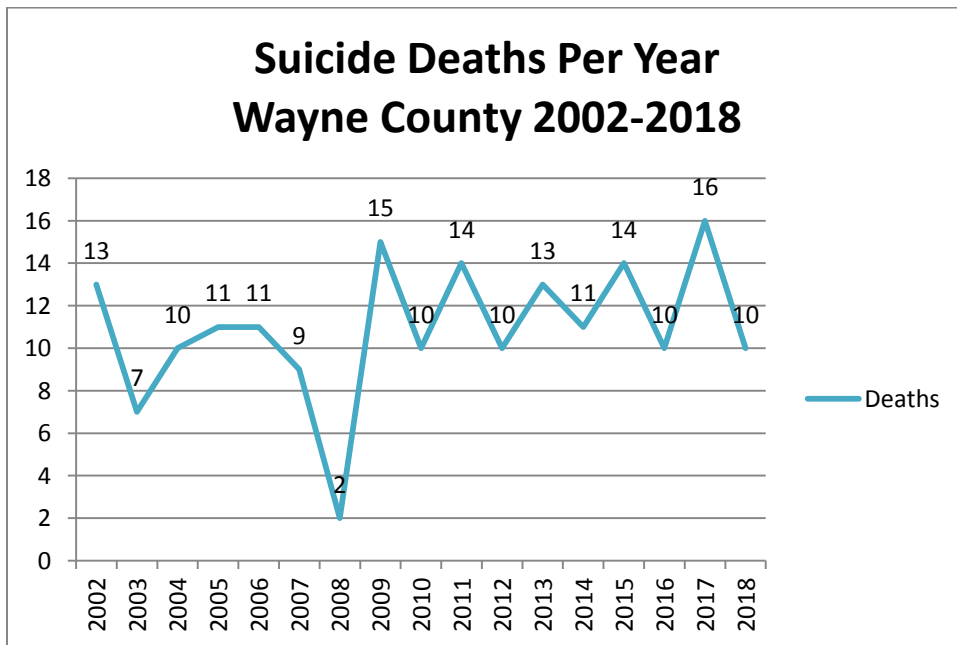


Figure 6. Numbers by Year

## Suicide Attempts

This report doesn't contain any county data for suicide attempts, but nationally based on the 2017 National Survey of Drug Use and Mental Health it is estimated that .6% of the adults aged 18 or older made at least one suicide attempt. It is important to note that although suicide is more prevalent in those aged 40-70 years old, those aged 18-25 are more likely to attempt suicide (Figure 5).<sup>5</sup>

Past Year Prevalence of Suicide Attempts Among U.S. Adults (2017)

Data Courtesy of SAMHSA

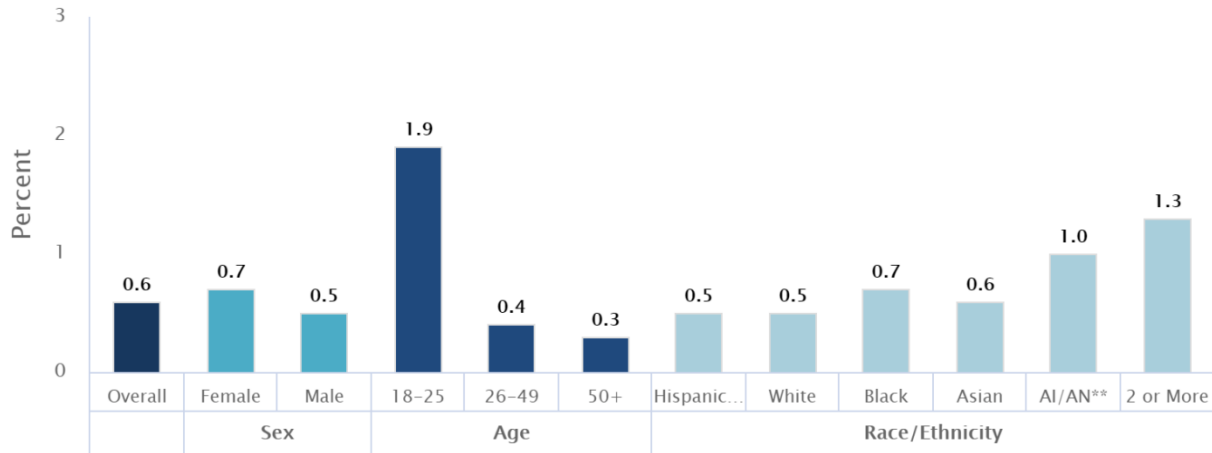


Figure 7. Suicide Attempts in U.S.

## Local Resources

Wayne County has several resources for suicide prevention for those in need and the families of those in need. The Wayne County Suicide Prevention Coalition works to raise awareness of the problems of depression and suicide and promote suicide prevention as a core component of health care services. The Loss Team is a part of the Suicide Prevention Coalition that provides information and support to family and loved ones when a loss by suicide occurs. It is comprised of trained survivors and mental health professionals acting as volunteers to bring immediate support to survivors of suicide (those persons who have had a loved one complete a suicide and are at risk due to their emotional response). The LOSS Team provides assistance to help the surviving cope with the trauma, follow-up contact and assists with coordinating referrals to services and support groups within the community. The PALS grief support group is another community resource for people affected by a loved one's suicide. The group meets the fourth Tuesday of each month, for more information call 330-264-1590. The Mental Health and Recovery Board of Wayne and Holmes Counties has a great deal of suicide prevention resources from suicide prevention trainings, to offering a crisis text line (Text 4HOPE to 741741) and a Crisis Team can be reached at (330)-264-9029. The crisis text line has reached approximately 28 million people since it began in August of 2013.<sup>6</sup>

## References:

1. Suicide. American Public Health Association. 2019. Retrieved from [apha.org/topics-and-issues/suicide](http://apha.org/topics-and-issues/suicide)

2. Suicide Statistics. American Foundation for Suicide Prevention. 2019. Retrieved from [afsp.org/about-suicide/suicide-statistics/](https://afsp.org/about-suicide/suicide-statistics/)
3. CDC Newsroom: Suicide Rates Rising Across the U.S. Centers for Disease Control and Prevention. June 7, 2018. Retrieved from [cdc.gov/media/releases/2018/p0607-suicide-prevention.html](https://cdc.gov/media/releases/2018/p0607-suicide-prevention.html)
4. Annual Report. America's Health Rankings; United Health Foundation. 2019. Retrieved from [americashealthrankings.org/explore/annual/measure/Suicide/state/OH](https://americashealthrankings.org/explore/annual/measure/Suicide/state/OH)
5. Mental Health Information; Statistics. National Institute of Mental Health. 2019. Retrieved from [nimh.nih.gov/health/statistics/suicide.shtml#part\\_154971](https://nimh.nih.gov/health/statistics/suicide.shtml#part_154971)
6. Suicide Prevention. Mental Health and Recovery Board of Wayne and Holmes Counties. 2019. Retrieved from [whmhrb.org/suicide-prevention](https://whmhrb.org/suicide-prevention).